

HYBRID INVERTER RSD TRANSMITTERS

INFORMATIONAL NOTE

OVERVIEW:

This document outlines which RSD Transmitters are built into the varying EG4 Hybrid Inverter models and how to identify the models that contain the specific RSD Transmitters.

TRANSMITTERS OFFERED:

The transmitters offered and built into EG4 Hybrid Inverters are shown below, in addition to the Module Level Powered Electronics (MLPEs) that are supported by the transmitters.

- **Tigo RSS Transmitter** – The Tigo RSS Transmitter is built-in to all FlexBOSS18 models and new models of the FlexBOSS21.
- MLPEs Supported – [Tigo TS4-A-F](#); [Tigo TS4-A-2F](#)

Product	SKUs	Model
FlexBOSS18	All SKUs	All Models
FlexBOSS21	EG4INV240V50AFLXBOSSV2 EG4INV240V50AFLXBOSSUS	IV-16000-HYB-AW-FX-02



NOTE:

FlexBOSS21 inverters with the SKU of EG4INV240V50AFLXBOSSUS may contain Tigo RSS or AP Smart transmitters. It is recommended to follow the Model number when identifying the built-in transmitter. All units with this SKU built after September, 2025 will contain the Tigo RSS Transmitter.

- **AP Smart Transmitter** – The AP Smart Transmitter is built into earlier models of the FlexBOSS21. FlexBOSS18 models do not come with AP Smart Transmitters.
- **MLPEs Supported** – [AP Smart RSD-S-PLC](#); [AP Smart RSD-D](#)

Product	SKUs	Model
FlexBOSS21	EG4INV240V50AFLXBOSS EG4INV240V50AFLXBOSSV1.1 EG4INV240V50AFLXBOSSUS	IV-16000-HYB-AW-FX-00 IV-16000-HYB-AW-FX-01
18kPV	All SKUs	All Models
12kPV	All SKUs	All Models



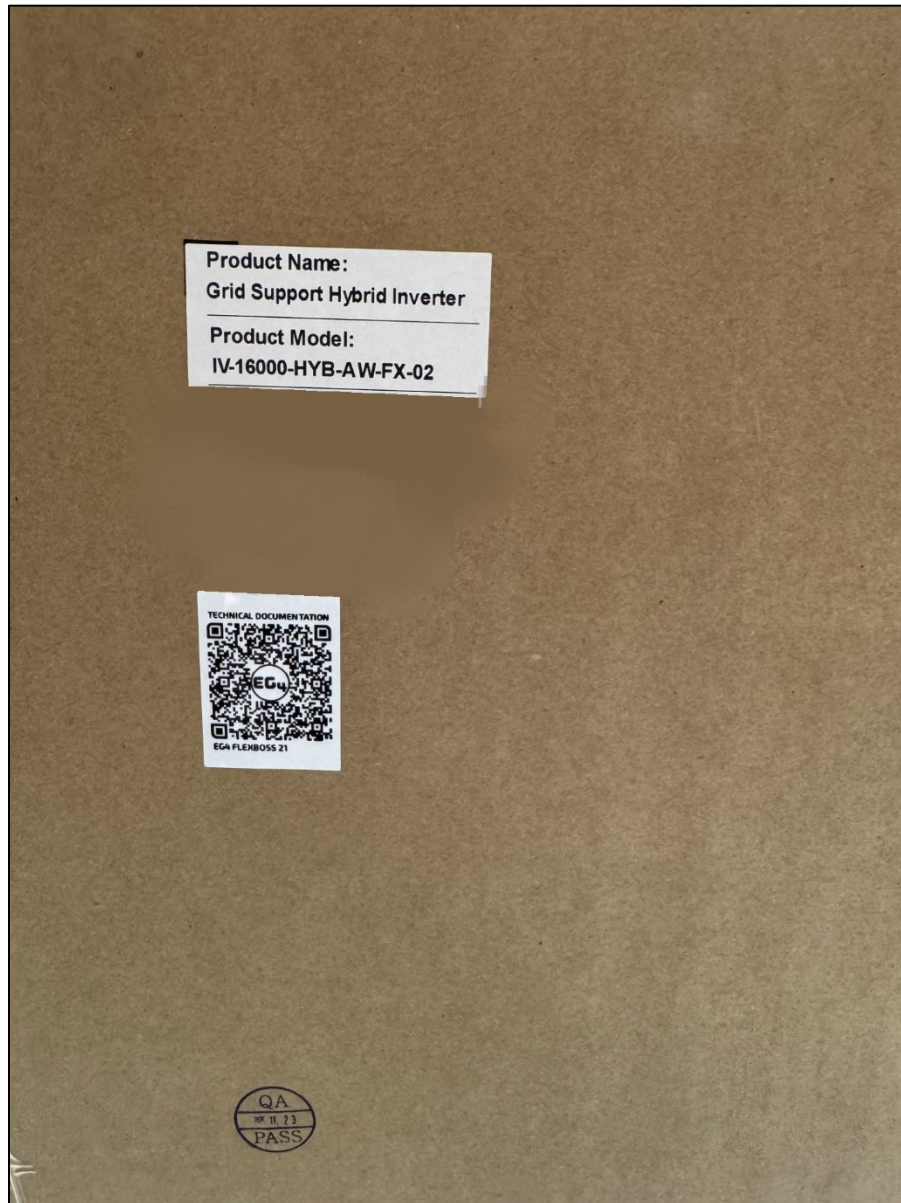
NOTE:

FlexBOSS21 inverters with the SKU of EG4INV240V50AFLXBOSSUS may contain Tigo RSS or AP Smart transmitters. It is recommended to follow the Model number when identifying the built-in transmitter.

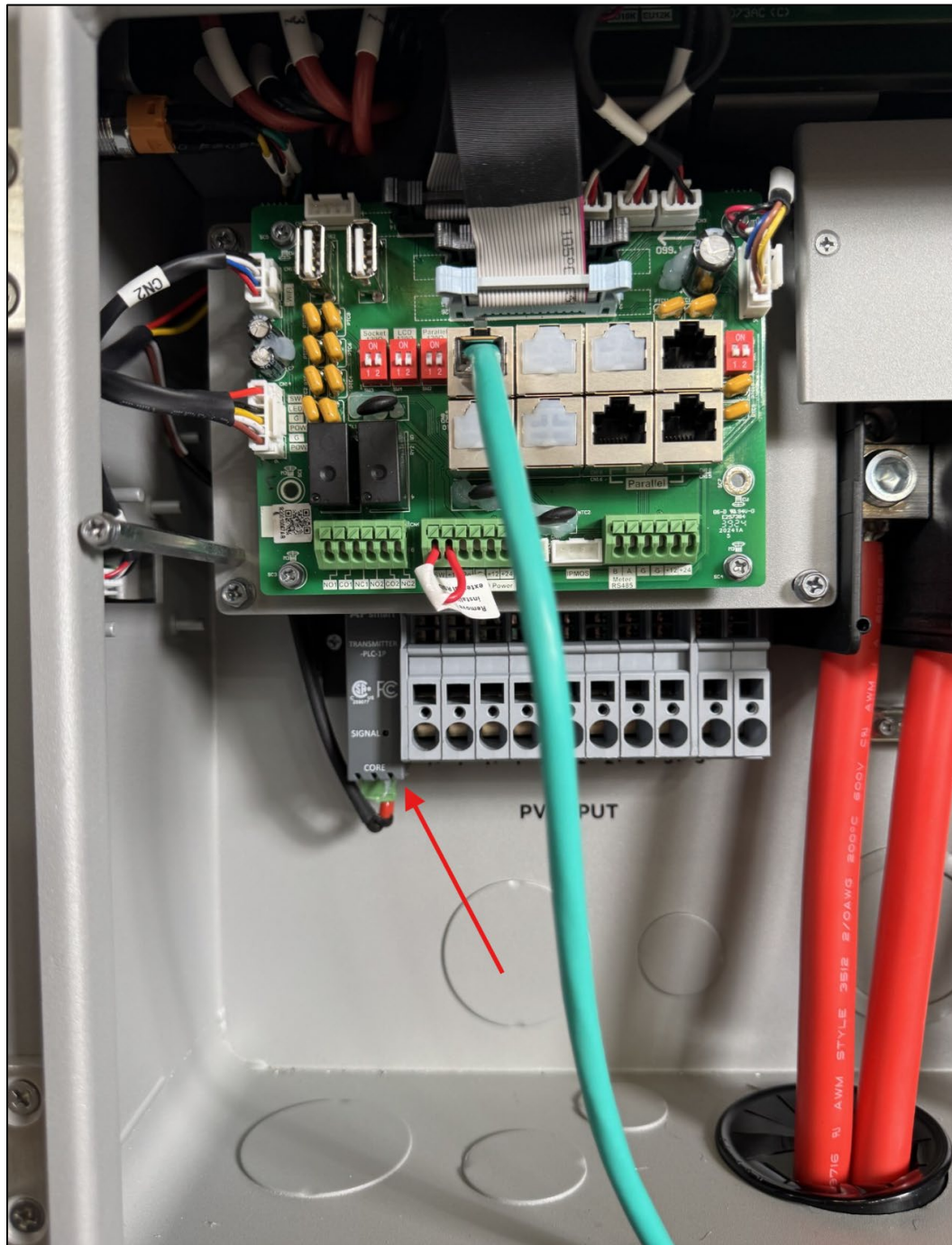
IDENTIFYING TRANSMITTERS INSIDE FLEXBOSS21 MODELS:

Below are a few ways to identify the model of FlexBOSS21 you will receive to prepare for the MLPES you can utilize for built-in support with your installation.

1. **Packaging & Box Review:** Locate the label on the side of the inverter box and identify the Product Model on the packaging as shown below. The photo below shows the inverter has a built-in Tigo RSS Transmitter.



2. **Physical Confirmation:** The RSD Transmitter is inside the inverter's terminal housing and can be located behind the communications board. The photo below shows the location of the Transmitter.



The photo above shows an AP Smart Transmitter

3. **Contact EG4 or One of Our Distributors:** If you have any questions around your next purchase, please contact EG4 or one of our certified Distributors. A list of certified EG4 Distributors can be found under the [resources tab on our website](#).

EG4 Distributors



EG4

ELECTRONICS

support@eg4electronics.com
(903) 609-1988
www.eg4electronics.com