

EG4® Wi-Fi Dongle

DONGLE FIRMWARE UPDATE

This document provides instructions for updating dongle firmware using the **EG4® Mobile App**. Once applied, the update strengthens system defenses, improves overall security posture, and restores customer confidence in the platform's reliability. Before beginning, ensure your mobile device has sufficient battery power and keep the app open throughout the process. Verify that the Wi-Fi dongle is securely connected and properly configured for the inverter.



NOTE:

Make sure Bluetooth and Location services are on before performing the update.

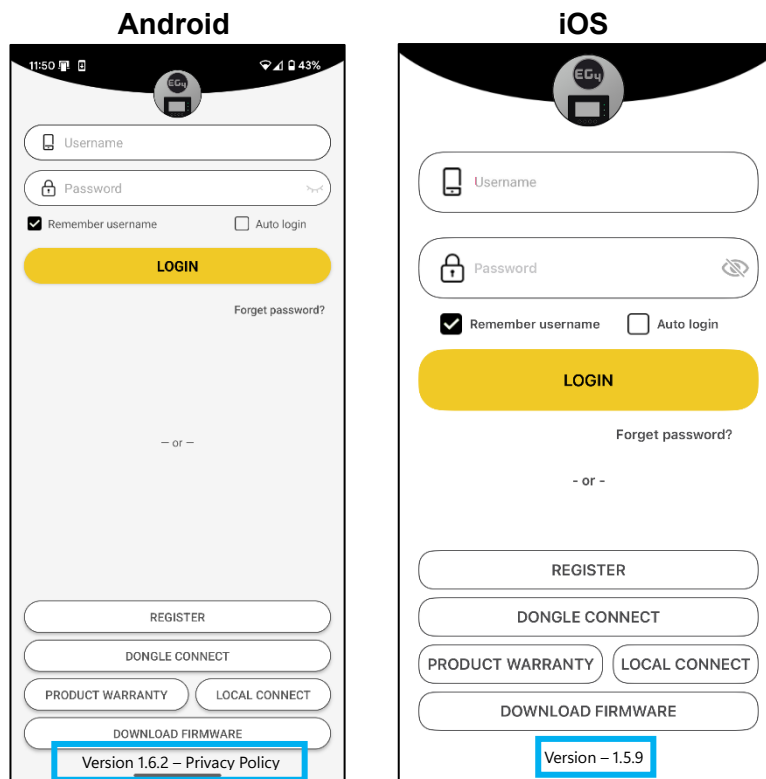
This guide applies **only to the second-generation E Wi-Fi dongle** (including BG, BJ, and other short dongles with a reset button). The upgrade process updates the dongle to **firmware version V3.0**, which adds encryption support. The **first-generation BA dongle** is not compatible as it does not support remote updates or encryption.



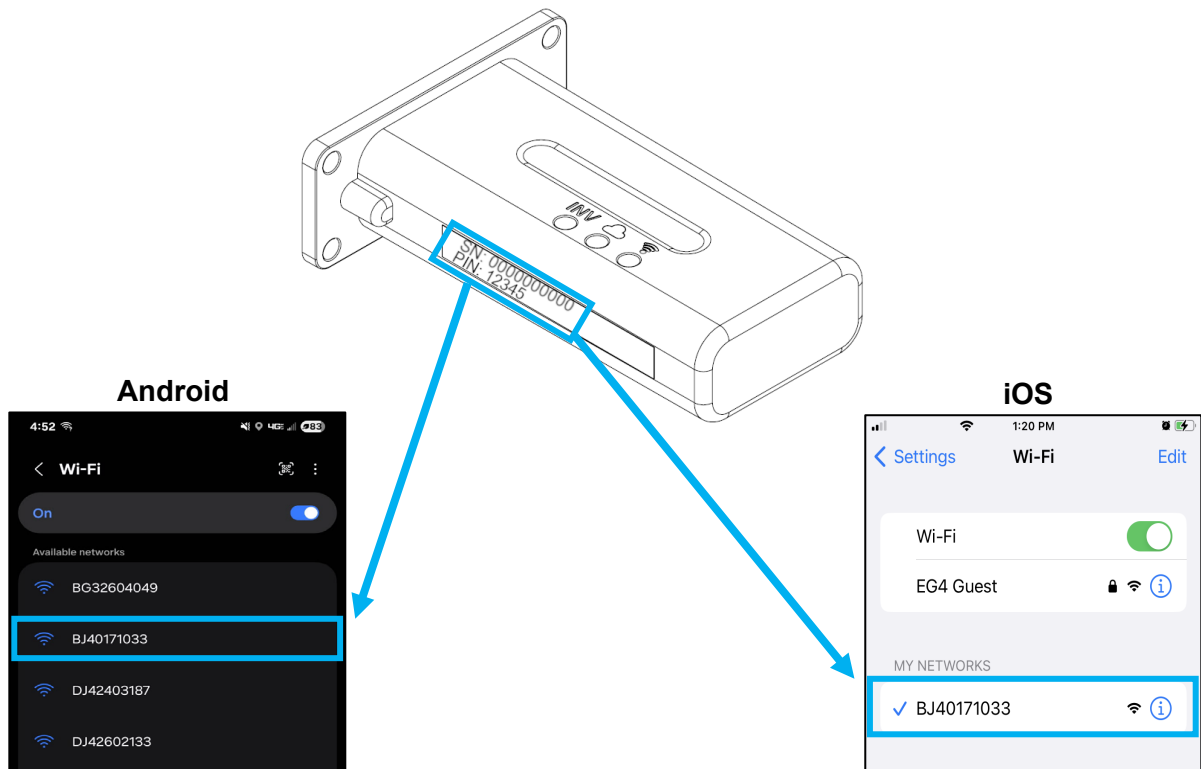
WARNING:

Performing this update will break compatibility with certain 3rd party monitoring devices that previously communicated with the system. The update is optional and is not necessary for system operation. If update is applied, the end-user cannot rollback the update to an older version.

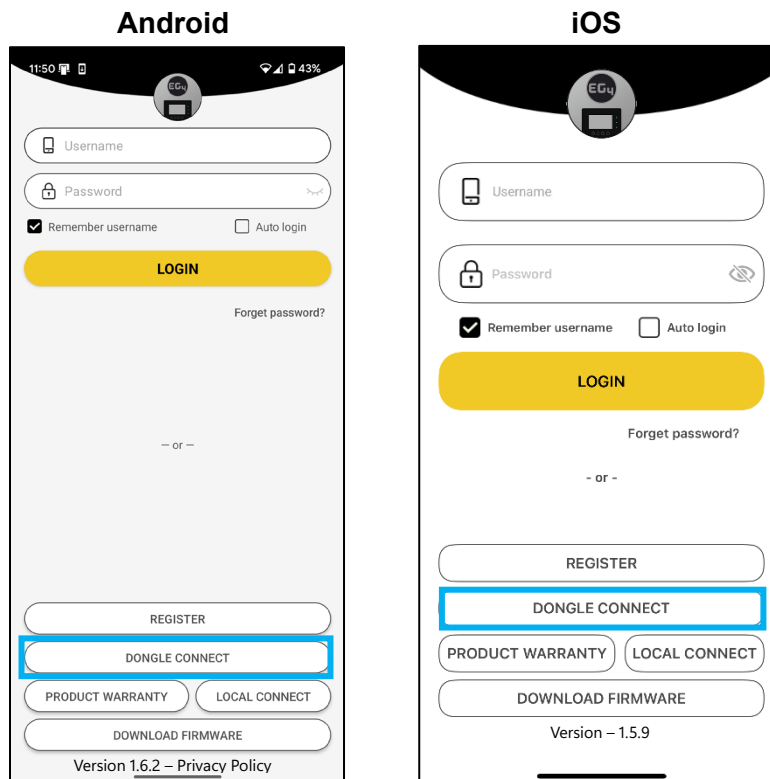
Step 1: Open the EG4® Electronics App on the mobile device. Make sure that the app version is at least 1.6.2 for Android and 1.5.9 for iOS before performing the update. If they are not, update the app.



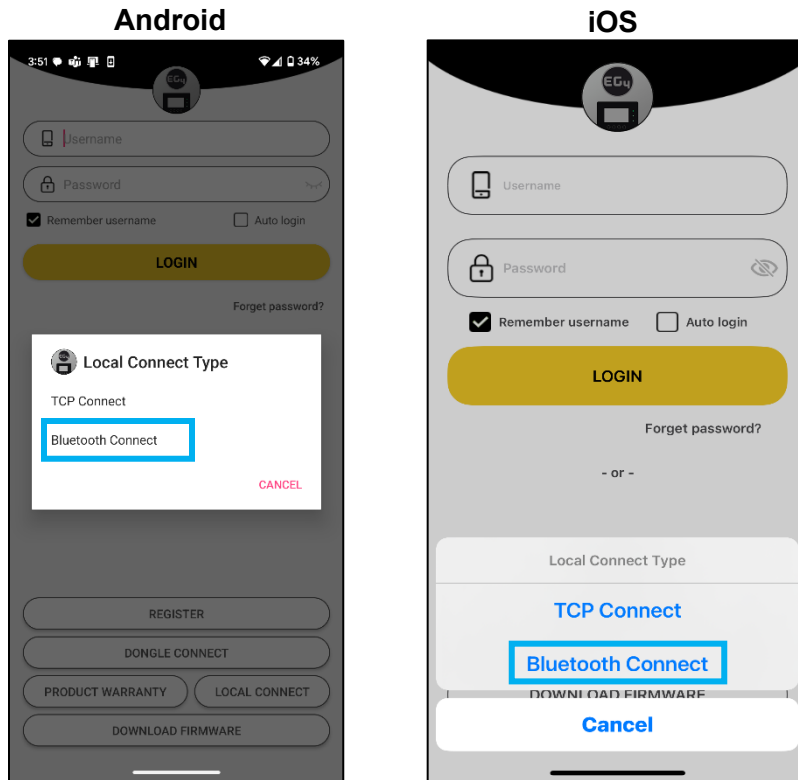
Step 2: Keep the app running and go to the phone's Wi-Fi settings. Connect the mobile device to the dongle's network. The dongle's network ID will be the same as the dongle's serial number.



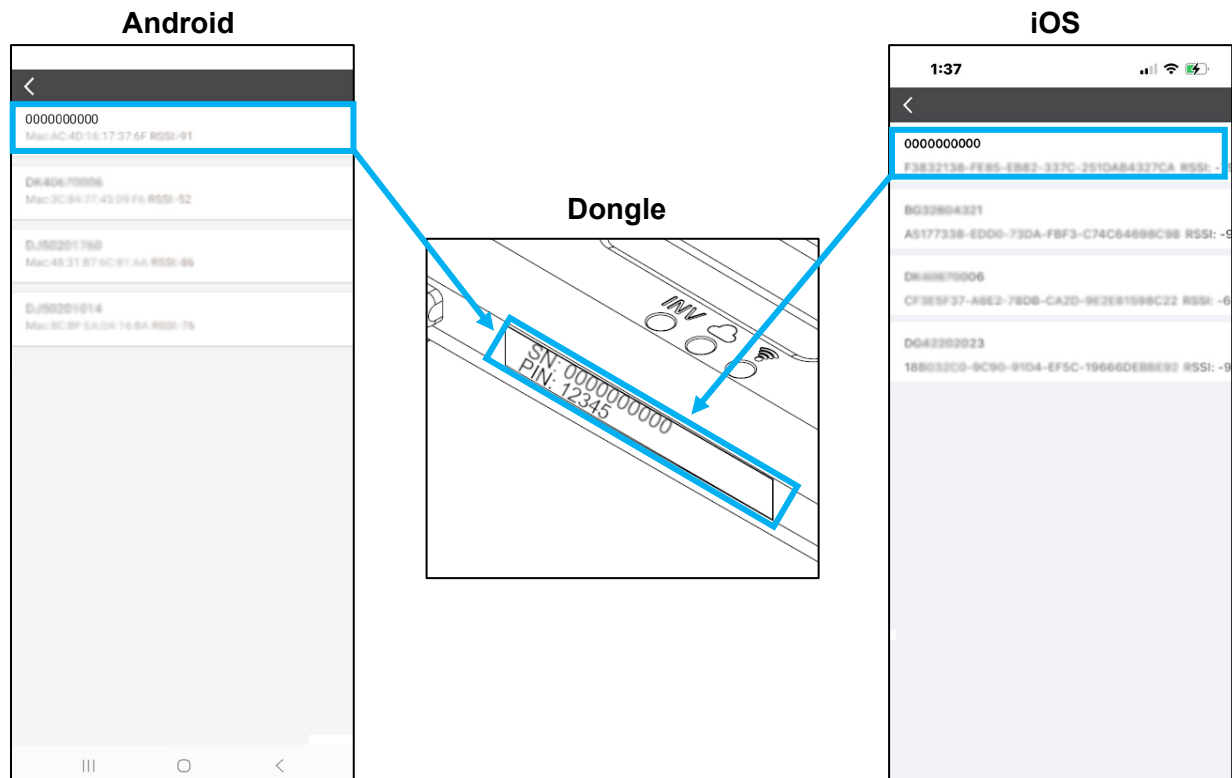
Step 3: When dongle hotspot is connected, go back to the main screen and select “DONGLE CONNECT”.



Step 4: Select “Bluetooth Connect” when the Local Connect Type screen pops up.



Step 5: Select the serial number that matches the number on the dongle located on the side.

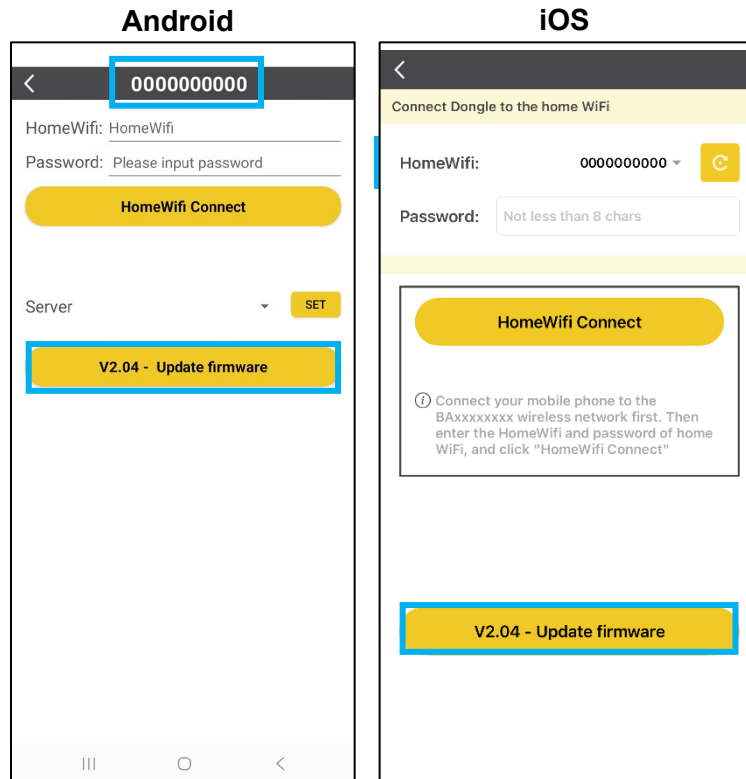


Step 6: When the dongle connection is established, the firmware update will be ready to select. Verify that the HomeWifi number matches the dongle serial number. For dongles that are already online (that have been configured with HomeWifi), upgrading firmware does not affect the reading of monitoring data, even if using the old app.

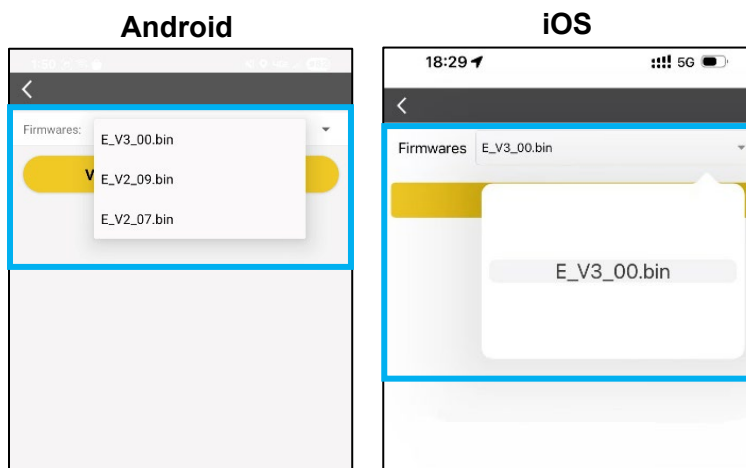


NOTE:

Before configuring HomeWifi with encrypted dongle, it is necessary to reset the hotspot password on the dongle parameter page of the NEW app.



Step 7: Verify that the firmware update is E_V3_00 before proceeding and start the update.



Step 8: Once the firmware update is done, the “Dongle Type” will update from E Wi-Fi to E Wi-Fi ENC. Select the “Configuration” tab and then the “Dongles” tab to view the change.

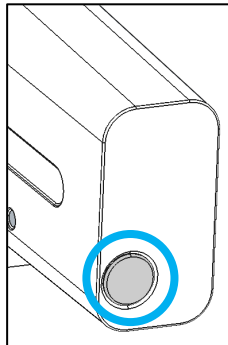
EG4 ELECTRONICS					
Monitor Data Configuration Overview Maintenance					
Stations Dongles Devices Users User Migration Record	<input type="text"/> All Status All Type + Add Dongle Import Dongle				
		Serial number	Dongle type	Station name	EndUser
	1	0000000000	E Wi-Fi	Device 123456	Docteam enduser
	2	BA31101768	Wi-Fi	RD 300mg 1000P	EndUser/air
	3	BA31101768	Wi-Fi	RD 300mg 1000P	EndUser/air
	4	BA31200454	Wi-Fi	RD 300mg 1000P	EndUser/air
	5				
	6				



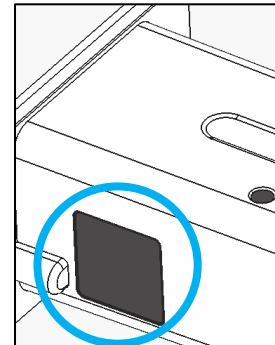
NOTE:

After the update, the Bluetooth function is disabled by default and needs to be turned on by pressing the button for 1 second on the dongle. Images below for reference.

Wi-Fi 6 Dongle



Wi-Fi 6/LAN Dongle



If Wi-Fi changes, after or during the update, the end-user will have to reconnect to the dongle to reconfigure. This will require a password. By default, the password is “123456”.

WI-FI DONGLE FIRMWARE UPDATE V3.0 CHANGELOG

- Encryption added to Dongle
- Bluetooth function must now be enabled by user
- Access Point has a default password
- Firmware update feature added to dongle connect page



CONTACT US

support@eg4electronics.com

(903) 609-1988

www.eg4electronics.com