

## Remote Panel Firmware Upgrade Process

**Step1.** Connect the unit and the PC via RS-232 communication cable.

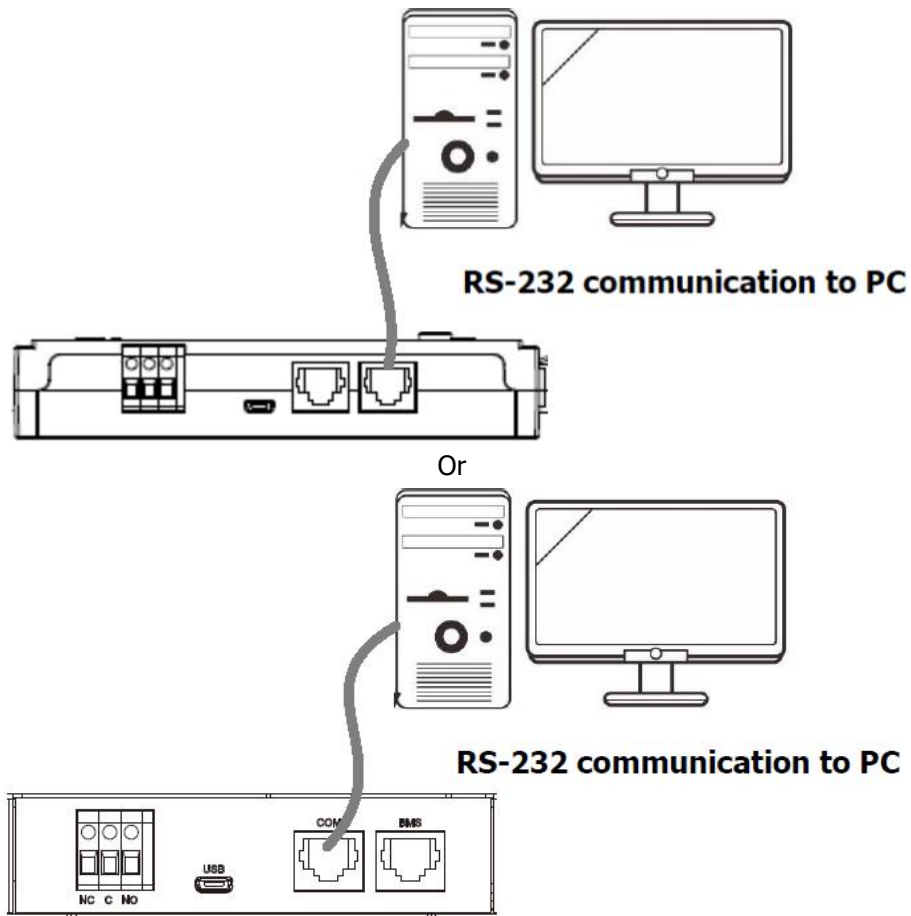


Figure 1

**Step2.** Access the power supply (PV or grid or battery) and light up the LCD.

**NOTE:** If you only connected batteries, turn on the inverter output before updating Remote. If the inverter output is not enabled, the machine will shut down after 1min, resulting in remote update failure.

**Step3.** Please check the COM Port Number as below pictures.

**NOTE:** Make sure all application communication software using this COM port is turned off, including some UPS monitoring software.

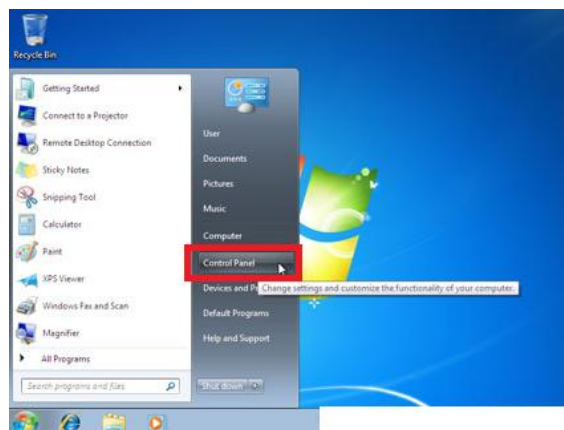


Figure 2



Figure 3

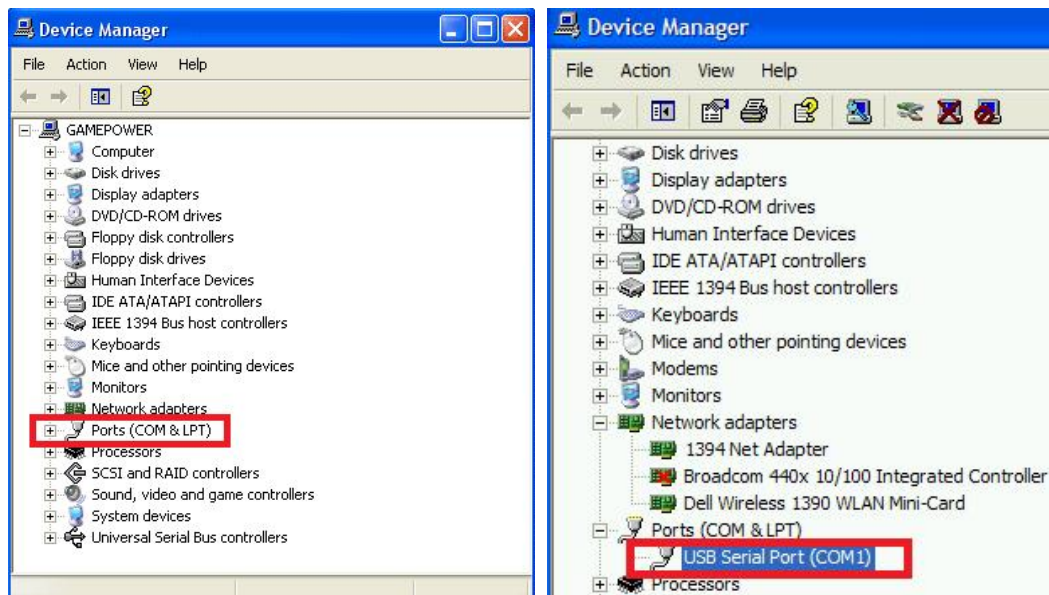


Figure 4

**Step4.** Execute "Remote Panel\_ReflashTool.exe". Please refer to below picture.

important.txt	2017/3/22 下午 0...	文字文件	1 KB
mcu.hex	2018/9/12 下午 0...	HEX 檔案	319 KB
MFC42D.DLL	1998/6/17 上午 1...	應用程式擴充	909 KB
MFCN42D.DLL	1998/6/17 上午 1...	應用程式擴充	61 KB
MFCO42D.DLL	1998/6/17 上午 1...	應用程式擴充	781 KB
MSVCRTD.DLL	1998/6/17 上午 1...	應用程式擴充	377 KB
Remote Panel_ReflashTool.exe	2017/3/20 上午 1...	應用程式	181 KB
winmm.dll	2008/4/14 下午 0...	應用程式擴充	160 KB

Figure 5

**Step5.** Click "Update MCU" to upgrade firmware. Please refer to below picture.

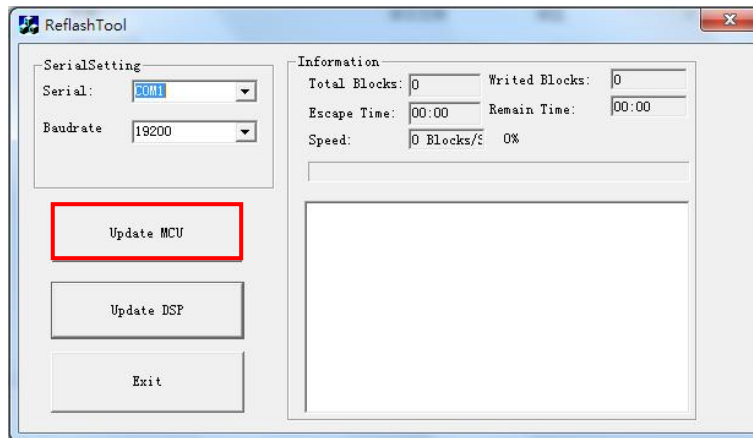


Figure 6

Please wait for about ten seconds.

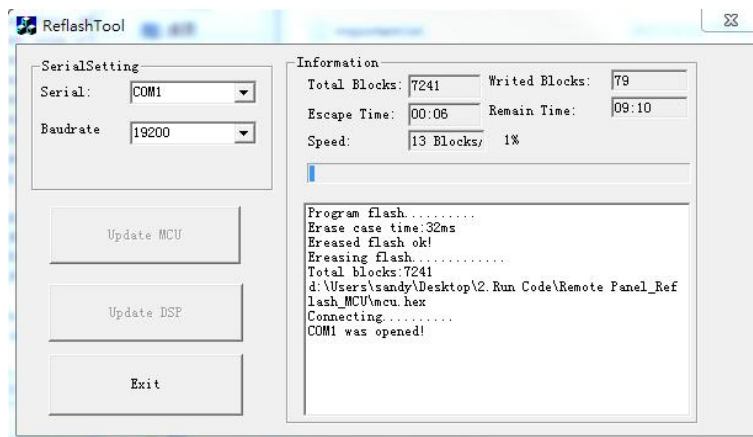


Figure 7

**Step6.** After the firmware upgrade successful, you can see the information as below. Click "Exit".

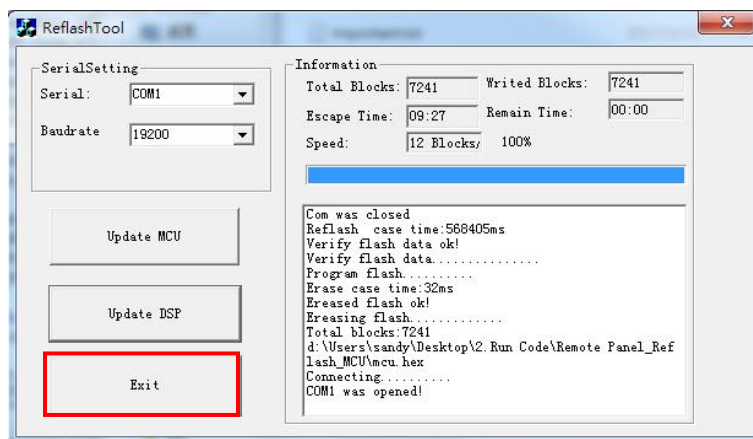


Figure 8