

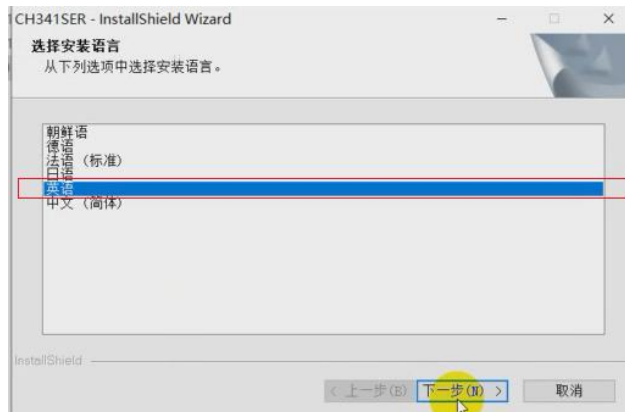
Firmware upgrade instructions

1. Install the Driver

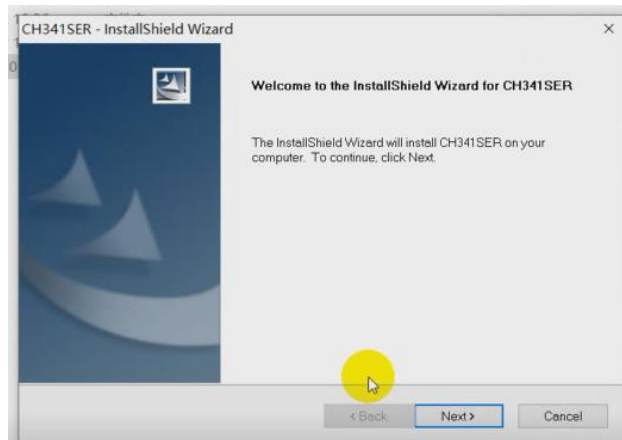
1.1 click the driver setup to open



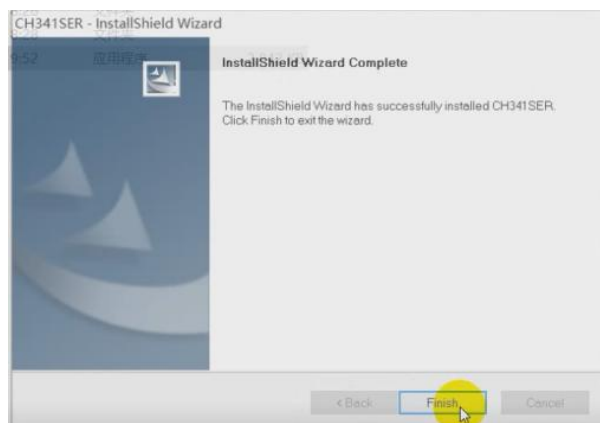
1.2 Select the “英语” for English language, and click NEXT (下一步)



1.3 click the NEXT to proceed



1.4 Click the Finish. The driver setup is installed successfully.



2. Cables connection

2.1 Plug the USB head of the **RS485 to USB upgrade cable** into the computer USB port



2.2 Plug the RS485 head of the **RS485 to USB upgrade cable** into the inverter RS485 port



2.3 Have the AC input cable or battery cable wired to make sure the inverter powered, need to see the screen display. (Please don't turn on the inverter power switch)

3. Do the firmware upgrade

3.1 Decompress the firmware package we shared



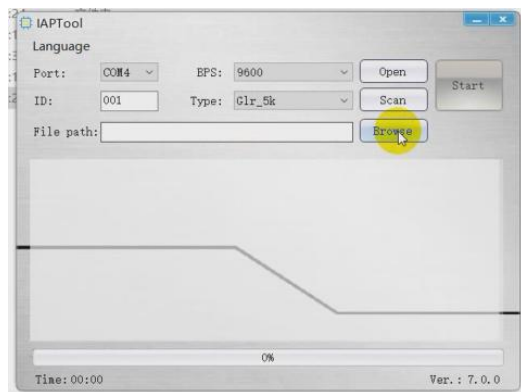
3.2 Click the setup "IAPTool" to operate



3.3 Click the "语言" to choose English language



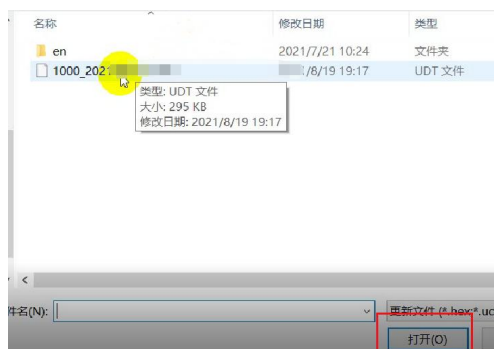
In English



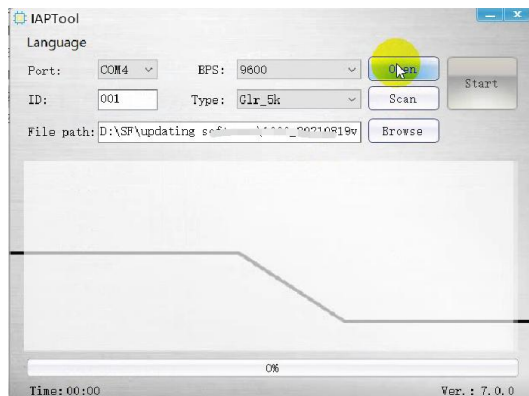
3.4 Click the Browse to choose the firmware



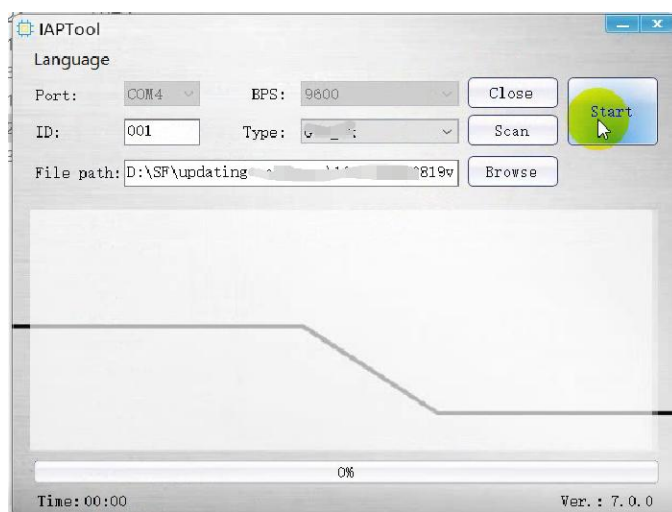
3.5 Choose the firmware we shared to proceed



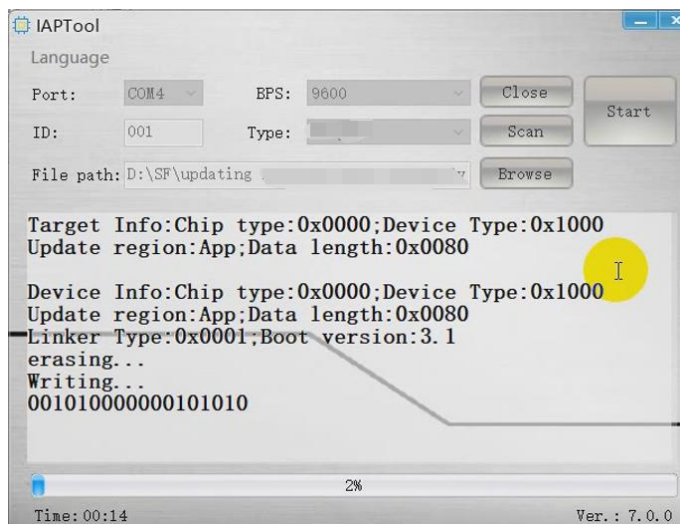
3.6 Click the Open



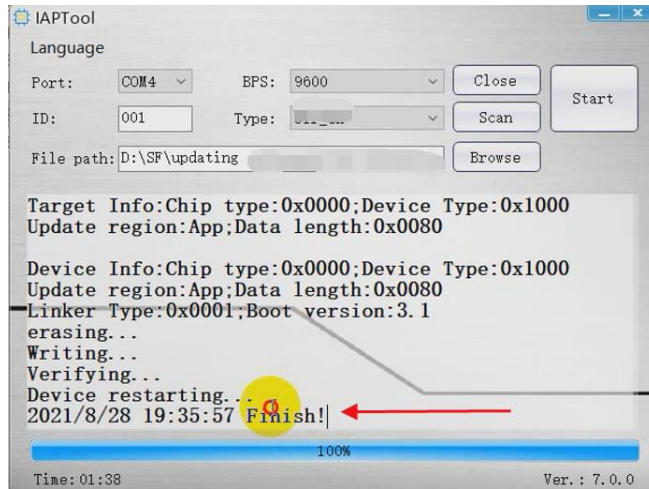
3.7 Click the start to proceed



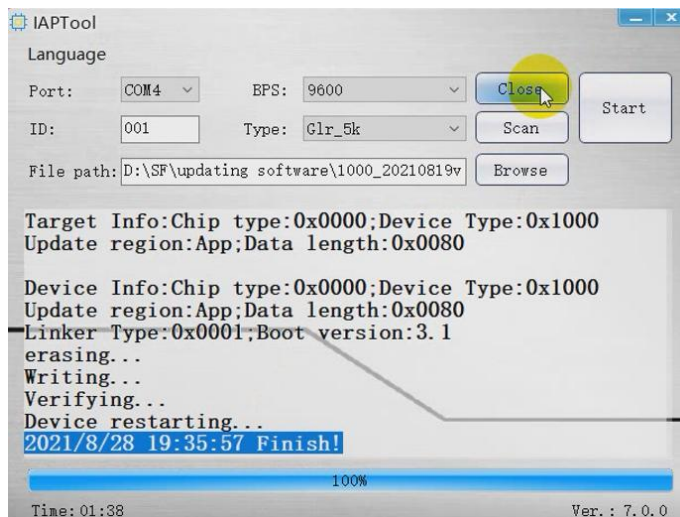
Upgrading



3.8 Upgrade succeeded



3.9 Click the Close and then the “x” on the top



Upgrade finished !